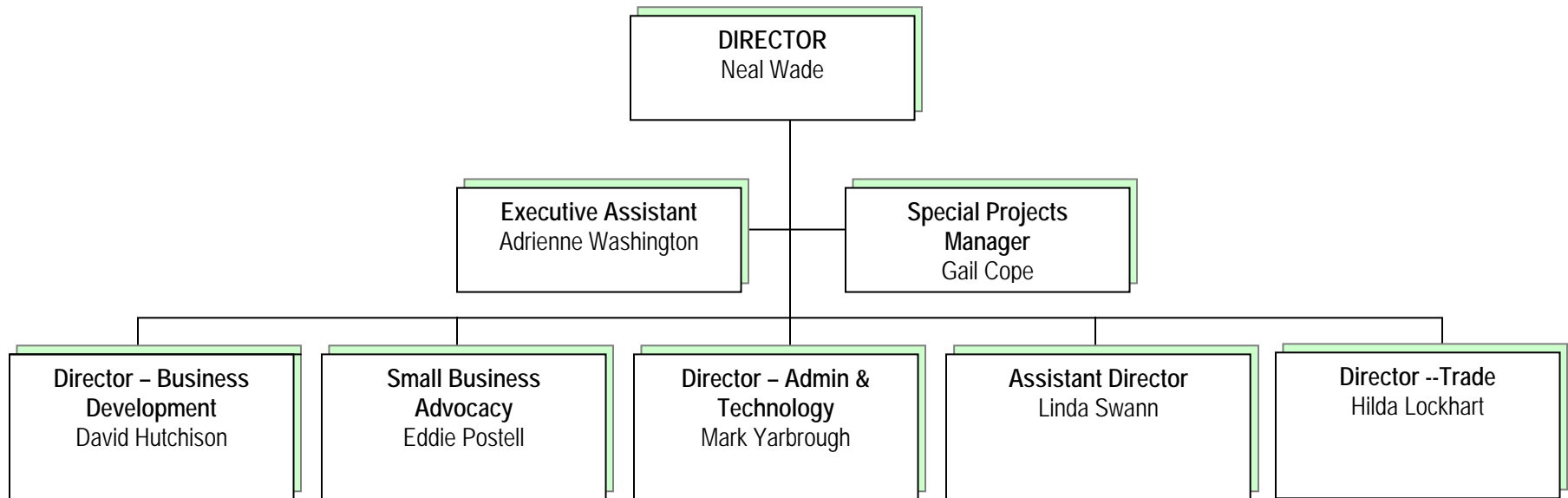


**Alabama Development Office**  
**Organizational Chart**  
**January 2009**



**Director – Business Development**

Project Management  
Existing Industry Expansion

**Director - Trade**

International Trade Promotion & Development  
SEUS Japan & Alabama/Korea

**Assistant Director - ADO**

Project Support & Cost Benefit Analysis  
Community Relations  
CapCo  
Liaison, EDPA Research

**Small Business**

Small Business Advocacy & Projects

**Director – Administration & Technology**

Personnel/Payroll  
Finance/Budget  
ADO Technology  
Public Information  
Property Inventory

**Manager – Special Projects**

Marketing Events  
Special Activities